



WELCOME to FG



YOUR INTRODUCTORY TUTORS

Ambrož Rodošek

ambroz.rodosek@gmail.com

Nejc Pevec

nejc.pevec103@gmail.com

Blaž Rozman

blazrozman16@gmail.com

Jon Bezgovšek

jon.bezgovsek8@gmail.com



Contact us on Facebook or e-mail

<https://www.en.fgg.uni-lj.si/>

HOW TO GET INFORMATION ABOUT STUDYING

University of Ljubljana | Faculty of Civil and Geodetic Engineering | tajnistvo@fgg.uni-lj.si

UL FGG STUDY DEPARTMENTS AND CHAIRS INTERNATIONAL OFFICE RESEARCH ABOUT

Students

University of Ljubljana | Faculty of Civil and Geodetic Engineering | tajnistvo@fgg.uni-lj.si Students

UL FGG STUDY DEPARTMENTS AND CHAIRS INTERNATIONAL OFFICE RESEARCH ABOUT

Web Classroom

To enter the web classroom you need your digital identity - UL ID. Use the mail that was provided by foreign students affairs office. If you have any problems with sign-in-to the classroom send an email to support: podpora@fgg.uni-lj.si. To switch language use the top menu and select: Slovenščina (sl) / English (en). Use the search form to enroll to the correct class or use the link below for all Erasmus classes

- Erasmus Courses on UL FGG Web Classroom
- Computer Rooms
- Online Course of Slovenian Language

Web page for student affairs

To enter the students affair's web page you need your digital identity - UL ID. Use the e-mail that was provided by foreign students affair's office. If you have any problems with sign-in to the page send an email to support: referat@fgg.uni-lj.si.

→ Short guide to UL FGG

→ Food menus of nearby restaurants

Translated via Google Translate (some errors may occur)
Most accept subsidised student's "bons"

- Eduroam Wifi accesibility
- International Students Welcome Guide

Winter semester:
from 1 October 2021, till 15 January 2022

Winter exam period:
from 18 January 2022, till 12 February 2022

Spring semester:
from 15 February 2022, till 1 June 2022

Spring exam period:
from 2 June 2022, till 2 July 2022

Autumn exam period:
from 16 August 2022, till 10 September 2022

→ Classes Schedule

The Faculty of Civil and Geodetic Engineering of the University of Ljubljana, Slovenia, provides



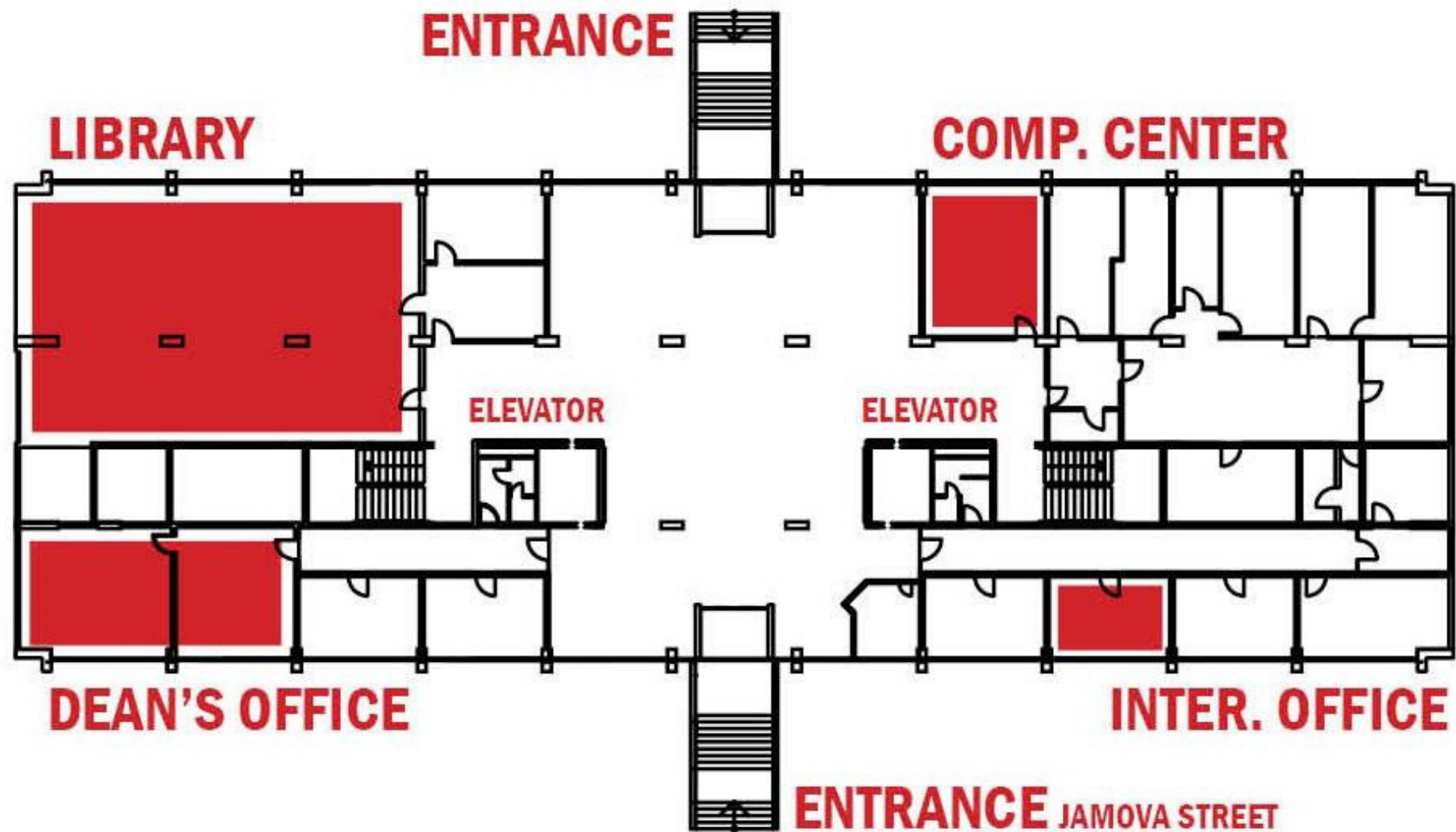
University ID/email: ab12345@student.uni-lj.si
(communication from the university email via outlook)

Application **mojFGG**

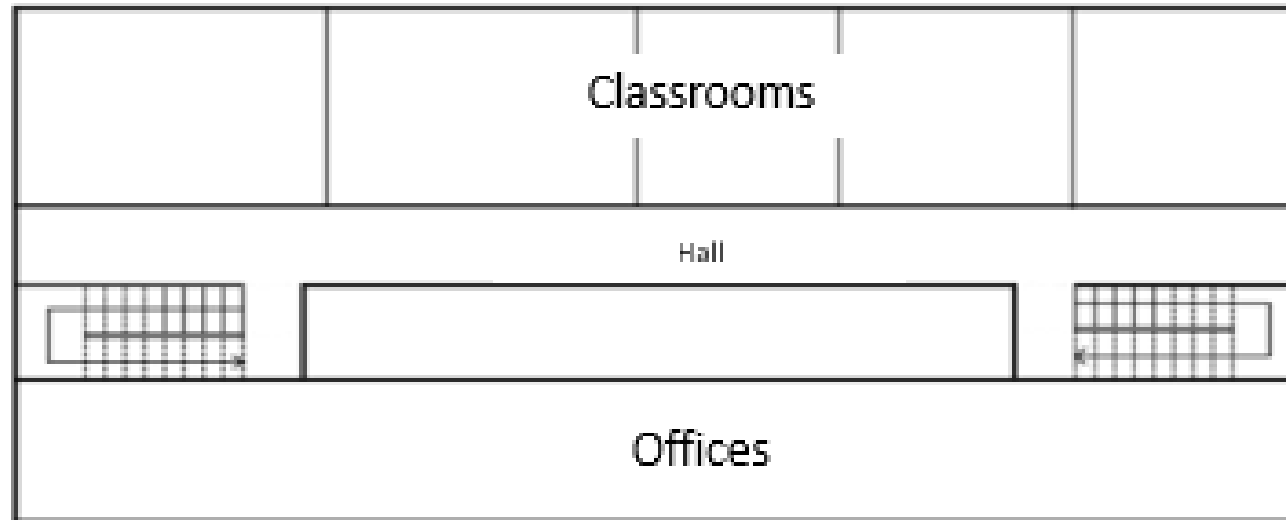
Guidelines for communication with professors via email

- Subject: subject title, main issue
- Signature: name, last name, year, course of study,
- grammatically correct
- mention your name at the beginning

SHORT GUIDE TO UL FGG



Floor plan



TIMETABLES – CLASSROOMS DESIGNATION

Classrooms	PI/1
Computer rooms	RU I/5
HAJDRIHOVA	H - 120
ZIMSKE VAJE	IN THE BASEMENT ON JAMOVA 2 (ENTRANCE IS UNDER THE STAIRS BY THE LIBRARY)



Subsidized Student Meals

Registartion

Registration steps (YT video)

- Online
- Office of Subsidized Student Nutrition (SŠP)

Location: [Študentski Kampus](#) (From FGG: 20 min walk, Bus 1)



Točka ŠOU v Ljubljani Kampus



🏠 Pivovarniška ulica 6, 1000 Ljubljana

☎ 01 43 80 218

☰ Informacije na elektronski naslov studentska.prehrana@sou-lj.si

Točka ŠOU v Ljubljani Kampus

Working hours

Monday

8:00 AM - 5:00 PM

Tuesday

8:00 AM - 5:00 PM

Wednesday

8:00 AM - 5:00 PM

Thursday

8:00 AM - 5:00 PM

Friday

8:00 AM - 2:00 PM

Saturday

Closed

Sunday

Closed

Študentska prehrana

APP: <https://www.studentska-prehrana.si/en>

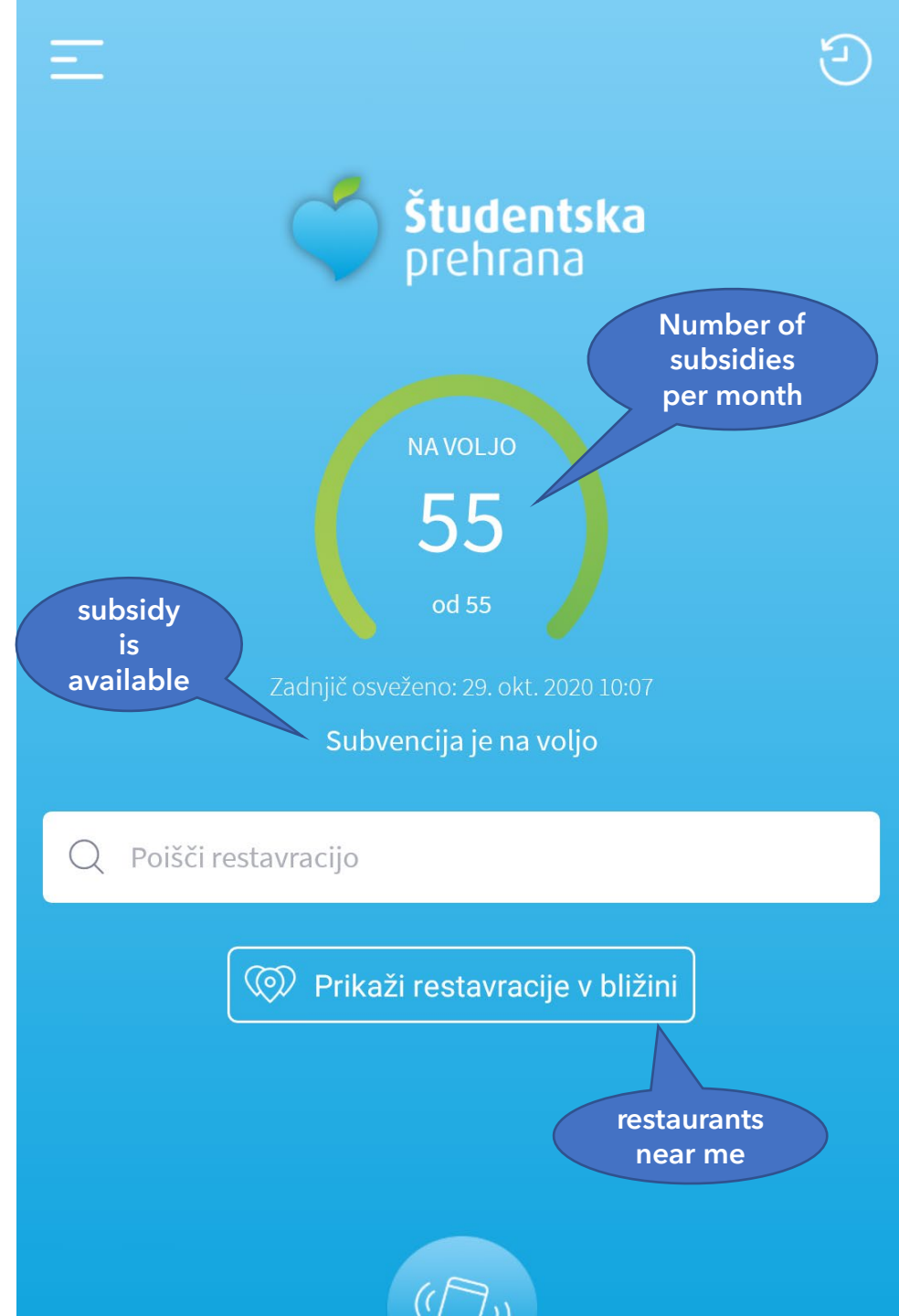
* For one day you can use two subsidies and between two subsidies has to go through a period of 4 hours

** When? From 7 a.m. until 10 p.m

***required to show an ID



<https://youtu.be/vArs3ajsz9c>

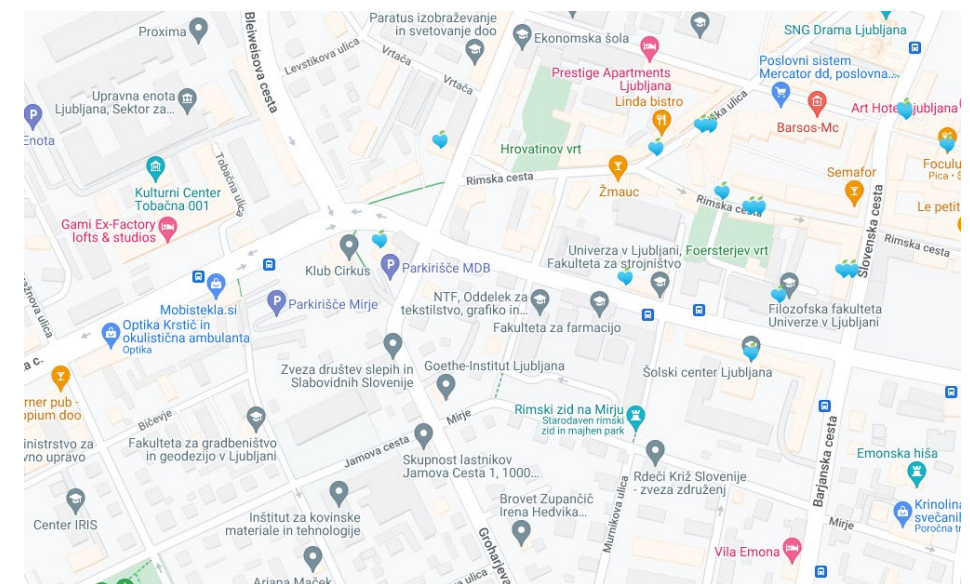
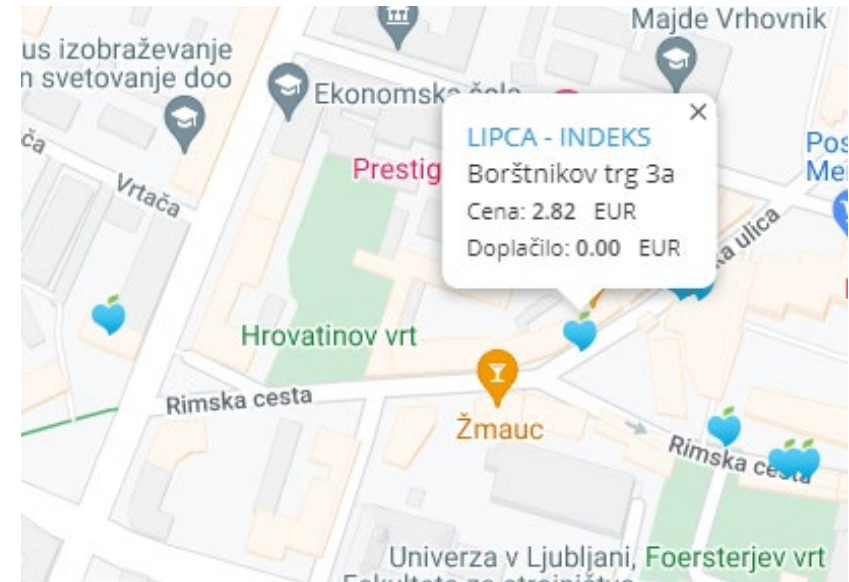


BONI: restaurants near FGG

- [Burek Olimpija Rimska](#)
- [Okrepčevalnica HOLYFOOD](#)
- [Ruby food](#)
- [Gostilnica in pivnica Vič](#)
- [Zbornica bar in žar](#)

No additional fee:

- [Znanstvena kavarna Mafija](#)
- [LIPCA - INDEKS](#)





Outdoor Walks in Ljubljana

Recomendacions:

- Tivoli Park – for hanging out with friends
- Rožnik Hill – for walking/running and trying “flancat” at the top
- The Path of Remembrance & Comradeship – for running
- Koseze Pond – for a picnic
- Šmarna Gora Hill – for hiking (the hardest one)
- Castle Hill – for a date 😊
- Golovec – for mountain biking

P
A
R
T
Y

[Shooters club](#)

[Foerster Bar](#)

[Cirkus club](#)

[Klub K4](#)

[Metelkova street](#)

[Cvetličarna](#)

[Square club](#)

You'll always end up in [Parlament Pub](#)



Student council

- student support
 - Office on the second floor
 - Box for anonymous complaints
 - Instagram: ss.ul.fgg
- SILE

how to move around Ljubljana

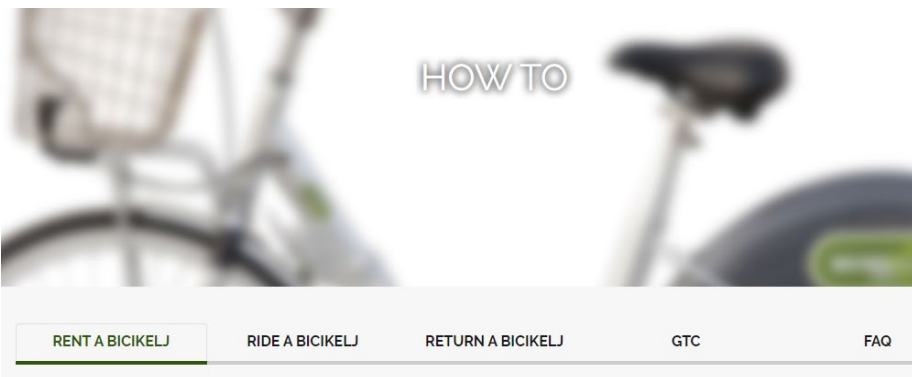
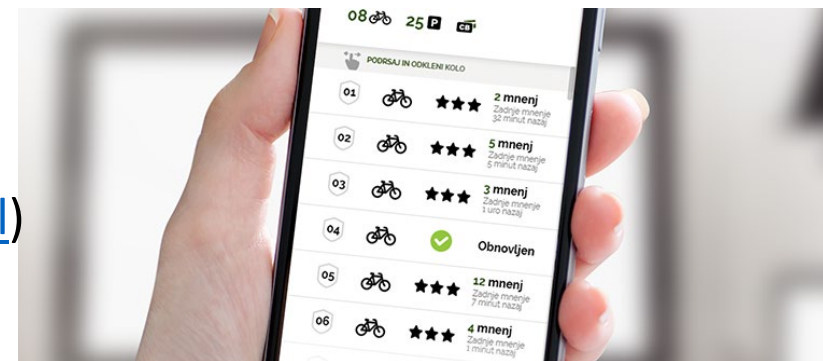


BICIKE(LJ)

only **3 €** per year (weekly subscription is 1 €)
many stations (nearest: Trg MDB, Kopališče Kolezija, FF, Center starejših)

we recommend using the app

www.bicikelj.si/en/home ([tutorial](#))



LPP (CITY BUS)

Payment:

- Urbana Card
- One fare (incl. Interchanging buses within 90 min) costs **1,30 €**
- Monthly Ticket: **20 €**

www.lpp.si/en





POPR

Personal and Professional Development Portal

Search ▾

Book ▾



Queries



Events



Appointm...



Opportuni...



Placements



Forms



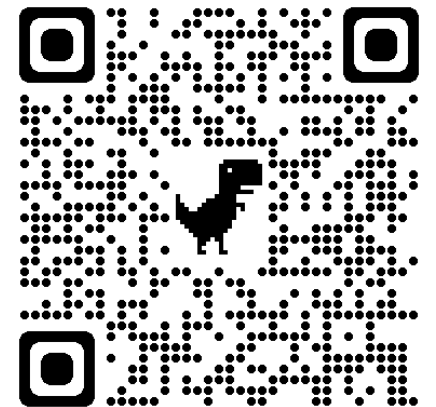
Pathways

Dobrodošli / Welcome!

Upcoming bookings

You don't have any upcoming bookings, have a look at our search pages to see what's available.

Activities





- More info <https://www.erasmusljubljana.si/>